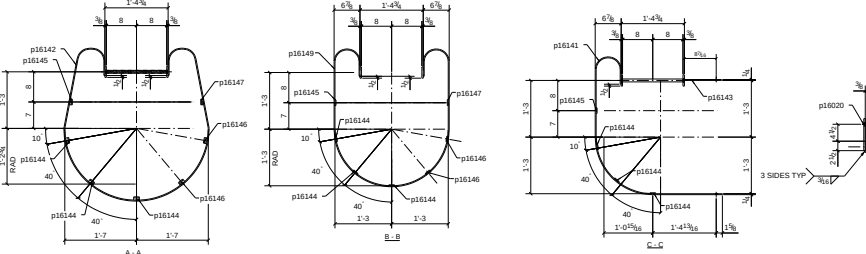
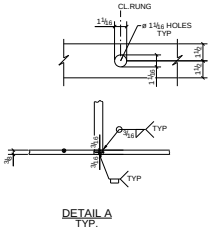
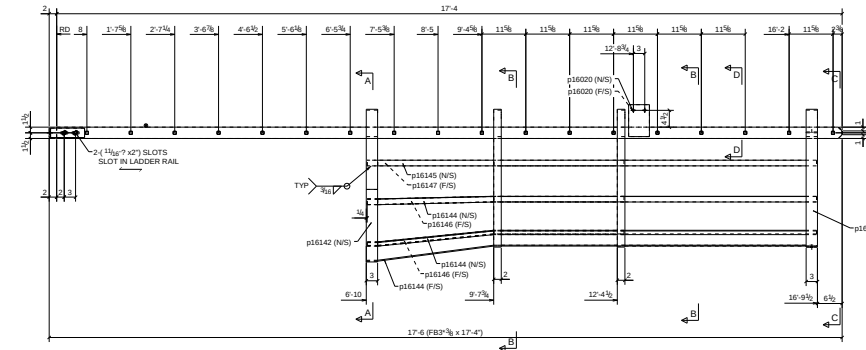
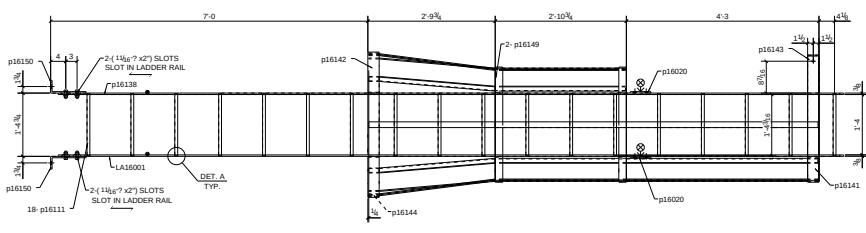


BILL OF MATERIAL								
ASM MARK	MARK	QTY	MATERIAL	LENGTH		TOTAL WEIGHT	GRADE	REMARKS
				FT	IN			
LAM001		2	FEF38	17'-4"		64	A36	
PI6020		4	PL38X12	0'-11 1/2"		3.9	A36	
PI6111		36	SQUARE BAR 3/4"	1'-4 3/8"		47.0	A36	INSTALL WITHIN 48" OF EACH END
PI6138		2	FEF38	17'-4"		65.0	A36	
PI6141		2	FEF14	8'-1 5/8"		16.7	A36	
PI6142		2	FEF14	10'-4 3/4"		26.7	A36	
PI6143		2	FEF14	5'-8 13/16"		2.1	A36	
PI6144		6	FEF12X14	9'-11 1/4"		38.0	A36	
PI6145		2	FEF12X14	9'-11 1/8"		12.7	A36	
PI6146		4	FEF12X14	5'-8 1/4"		14.5	A36	
PI6147		2	FEF12X14	5'-8 1/8"		7.2	A36	
PI6149		4	FEF14	9'-3 7/16"		31.5	A36	
PI6150		4	FEF38X12	1'-0 3/8"		6.6	A36	
				TOTAL WEIGHT		342		
LAM001 BOLT QTY'S ARE FOR ONE ASSEMBLY ONLY								
		2	1/2" Ø BOLT	0'-11 1/2"			A307	Site
		2	3/8" Ø BOLT	0'-1 5/8"			A36	Site
		4	1/2" Ø BOLT	0'-1 3/4"			A307	Site
		4	1/2" Ø BOLT	0'-1 3/4"			A307	Workshop



2 LADDERS REQ'D AS DRAWN MK LA16001

DESIGN LOCATION: _____
 DATE: _____
 DR: c

GENERAL NOTES:

- 1) ALL MATERIAL = A36 (UN)
- 2) ALL HSS MATERIAL = A500B (UN)
- 3) DEBURP ALL HOLES
- 4) NO PAINT 3\"/>

PRINT			RECORD		
DATE	NO. PRNTS	FOR	DATE	NO. PRNTS	FOR

NO. DATE REVISION

E.DWG. REF: E16004

BOLTS - 3/4\"/>

OPEN HOLES - 13/16\"/>

PAINT - F51

CLEAN - F51

UNDESIGNED