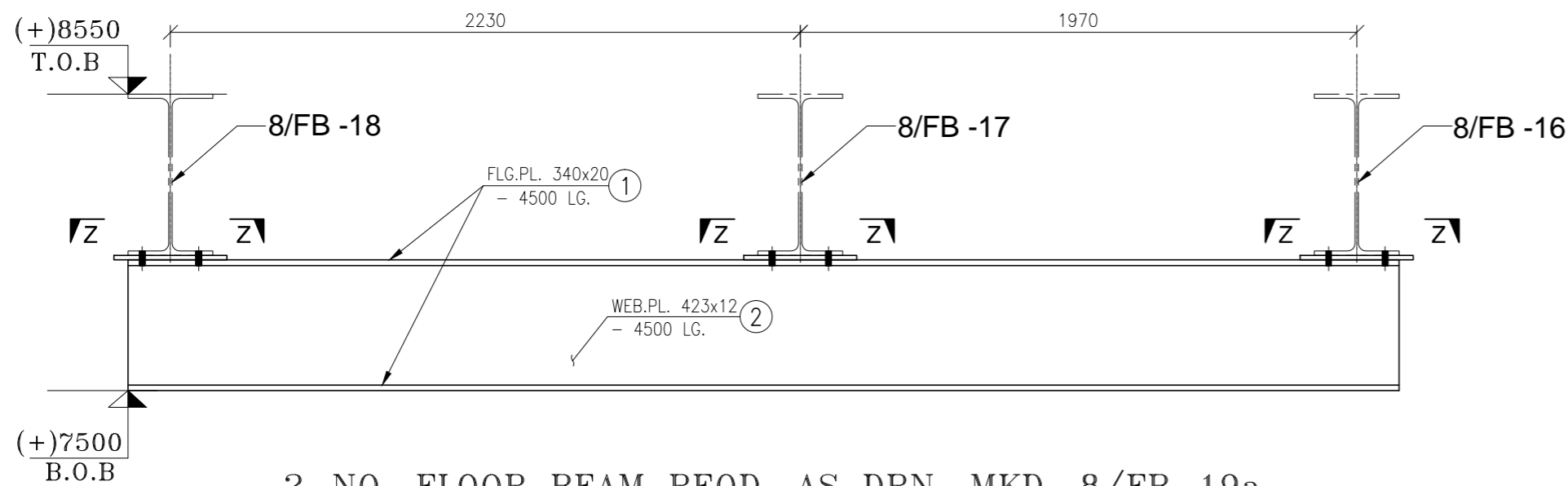
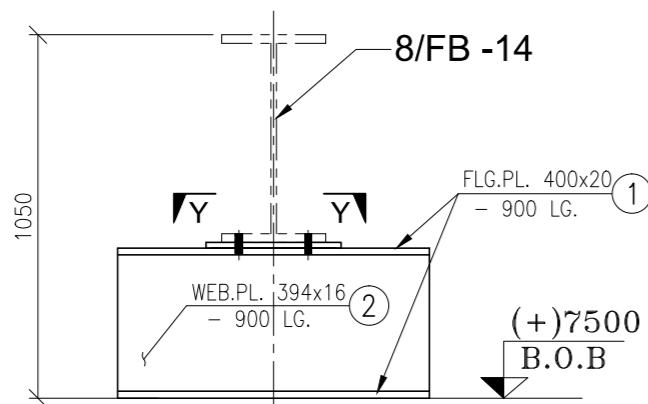


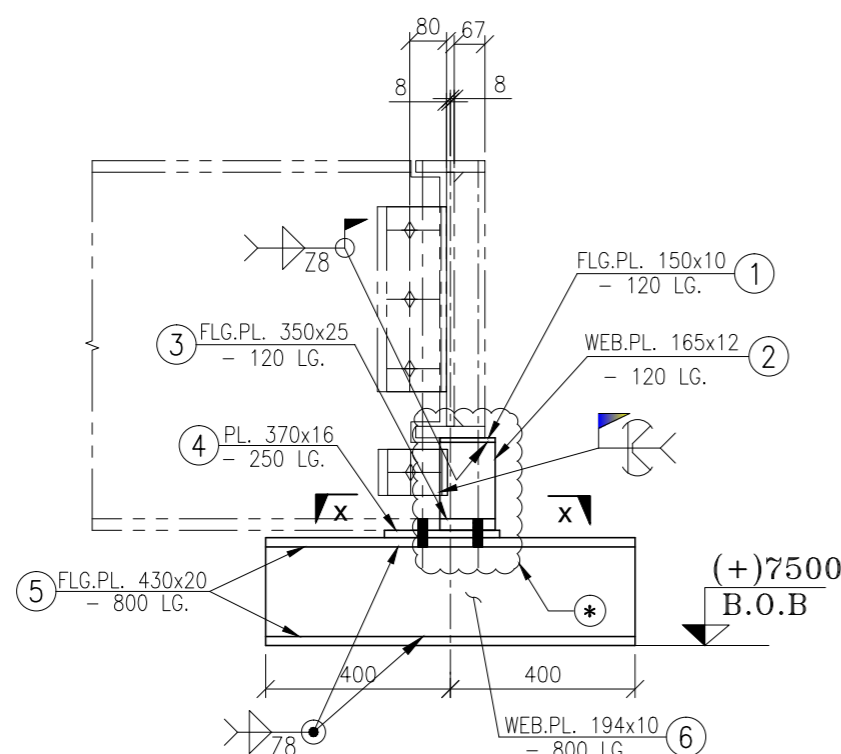
Please Do Not Scale. If in Doubt, ASK.



2-NO. FLOOR BEAM REQD. AS DRN. MKD. 8/FB-19a

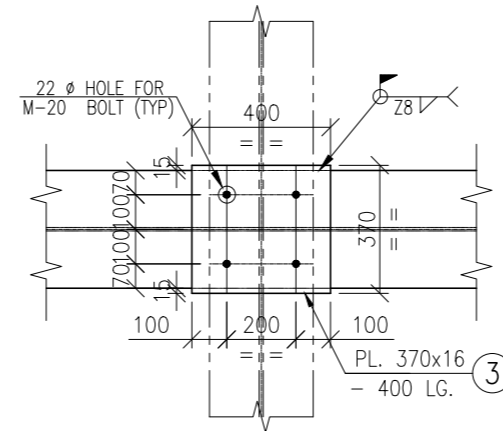


1-NO. FLOOR BEAM REQD. AS DRN. MKD. 8/FB-19b

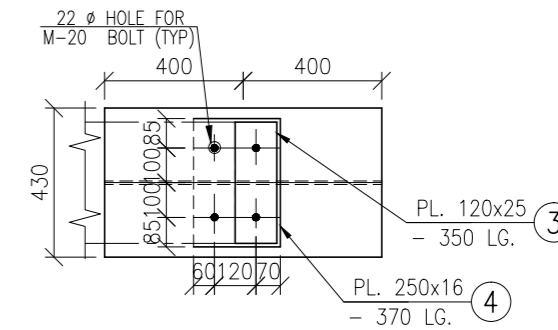


1-NO. FLOOR BEAM REQD. AS DRN. MKD. 8/FB-19c

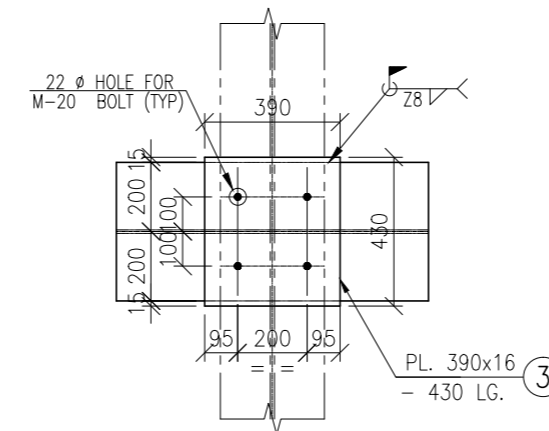
BILL OF MATERIALS								
ERECTION MKD.	ITEM NO.	SECTION	LENGTH IN mm.	NOS. REQD.	UNIT WT. (Kgs.)	TOTAL WT. (Kgs.)	QTY. REQD.	ERECTION MKD. WT. (Kgs.)
8/FB-19a	1	PL.340x20	4500	4	157.00	960.84		
	2	PL.423x12	4500	2	94.20	358.61		
	3	PL.370x16	400	6	125.60	111.53		
						TOTAL WEIGHT FOR 8/FB-19a	1431	1431
8/FB-19b	1	PL.400x20	900	2	157.00	113.04		
	2	PL.394x16	900	1	125.60	44.53		
	3	PL.390x16	430	1	125.60	21.06		
						TOTAL WEIGHT FOR 8/FB-19b	178.63	178.63
8/FB-19c	1	PL.150x10	120	1	78.50	1.413		
	2	PL.165x12	120	1	94.20	1.86		
	3	PL.350x25	120	1	196.25	8.24		
	4	PL.370x16	250	1	125.60	11.61		
	5	PL.430x20	800	2	157.00	108.01		
	6	PL.194x10	800	1	78.50	12.18		
						TOTAL WEIGHT FOR 8/FB-19c	143.313	143.313
						GRAND TOTAL WT. =1752.94 Kgs.		



SECTION Z-Z
(SCALE 1:20)



SECTION X-X
(SCALE 1:20)



SECTION Y-Y
(SCALE 1:20)

* PREVIOUSLY MKD. PL-14 HAS TO BE CUT OUT & REPLACED WITH NEW MEMBER AS SHOW IN DETAIL

FOR DETAIL OF PL-14 REFER DWG.1819-725 SH-83 (SEC. 5-5)

FOR MARKING DRG. No. 1819-725-Sh.80

KORUS Engg. Solutions Pvt. Ltd.
This Drawing is the Property of KORUS Engg. Solutions Pvt. Ltd. It should be used for the specific project mentioned therein. This is not to be copied or used for any other project or purpose without their permission in writing.

Note:-

1. ALL DIMENSIONS AND LEVELS ARE IN mm. UNLESS NOTED OTHERWISE.
2. ALL WELDS ARE 6MM LEG SIZE CONTINUOUS FILLET WELD UNLESS NOTED OTHERWISE.
3. ALL PERMANENT & ERECTION BOLTS ARE M20 U.L.N.O.
4. ALL HOLES ARE 1.5MM LARGER THAN THE BOLTS FOR PERMANENT BOLTS & ERECTION BOLTS
5. OPEN HOLES FOR PERMANENT BOLT SHOWN THUS
6. OPEN HOLES FOR ERECTION BOLTS SHOWN THUS
7. MATERIAL SPECIFICATIONS SHALL BE AS PER IS-2062-2006-B250A FOR SECTIONS AND PLATES UPTO 20mm THICKNESS & IS-2062-2006-B250BR FOR PLATES ABOVE 20mm THICKNESS.

8. "Z" DENOTES LEG SIZE.
9. FORCE AGAINST MEMBER NOT SHOWN TO BE TAKEN AS ST AND THE CONNECTION TO BE DEVELOPED ACCORDINGLY.
10. WELDING DETAILS & SYMBOLS SHALL BE AS PER IS-813, IS-816 & IS-9595 (LATEST)
11. ALL PROVISIONS STATED IN LATEST INDIAN CODES RELATED TO DETAILING/FABRICATION & ERECTIONS TO BE FOLLOWED.
12. ALL BUTT WELDING SHALL BE FULL STRENGTH & RADIOGRAPHICALLY TESTED QUALITY.
13. ALL INCLINED MEMBERS AND SIZE OF GUSSET PLATE TO BE VERIFIED WITH SHOP LAYOUT BEFORE FABRICATION.
14. CROSS WELDING TO BE AVOIDED IN TENSION MEMBERS AS FAR AS POSSIBLE.
15. PLAINED SURFACE SHOWN THUS
16. BEFORE WELDING ALL SURFACES IN THE WELD AREA AND THE CONTACT FACES SHALL BE PROPERLY CLEANED.

0	10.06.20	RELEASED FOR FABRICATION	NISHANT	YOGESH	NISHANT	SKM			
Rev. No.	Date	Alteration	Design	Drawn	Chkd.	Appd.	Mech.	Elec.	Ubl.

EXTENSION OF SMS # 3		Scale	1:20	Design	NISHANT
ZPF PLATFORM		Drawn	YOGESH	Chkd.	NISHANT
DETAILS OF FLOOR BEAM MKD. 8/FB-19		Appd.	S.K.M.	Rev.	10.06.20
KORUS Engg. Solutions Pvt. Ltd.		Sh.	83a	Next	84
		Rev.	0		

TD.