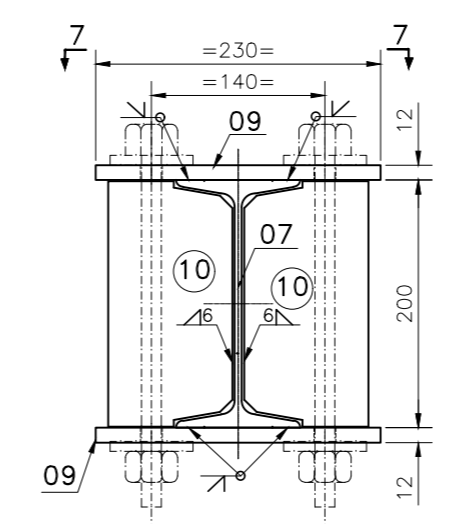
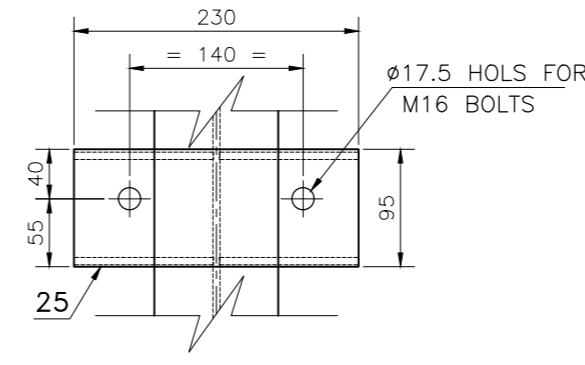


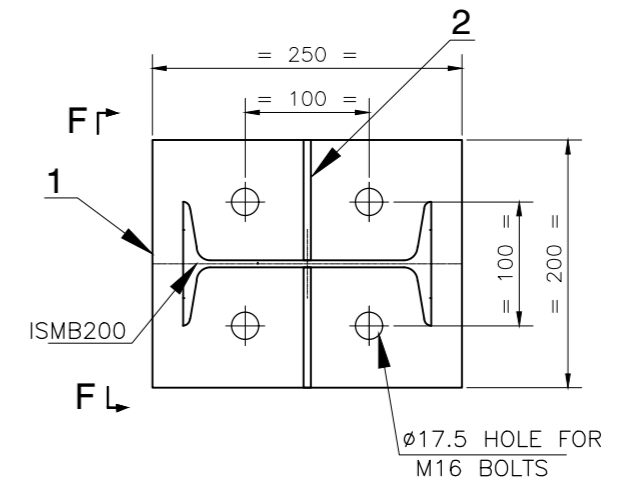
PLAN OF TAIL END



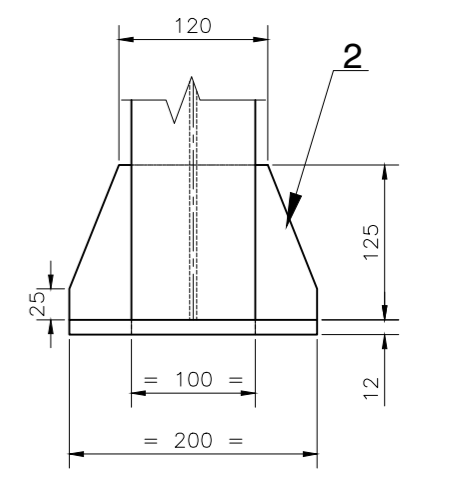
SECTION 4-4



SECTION 7-7



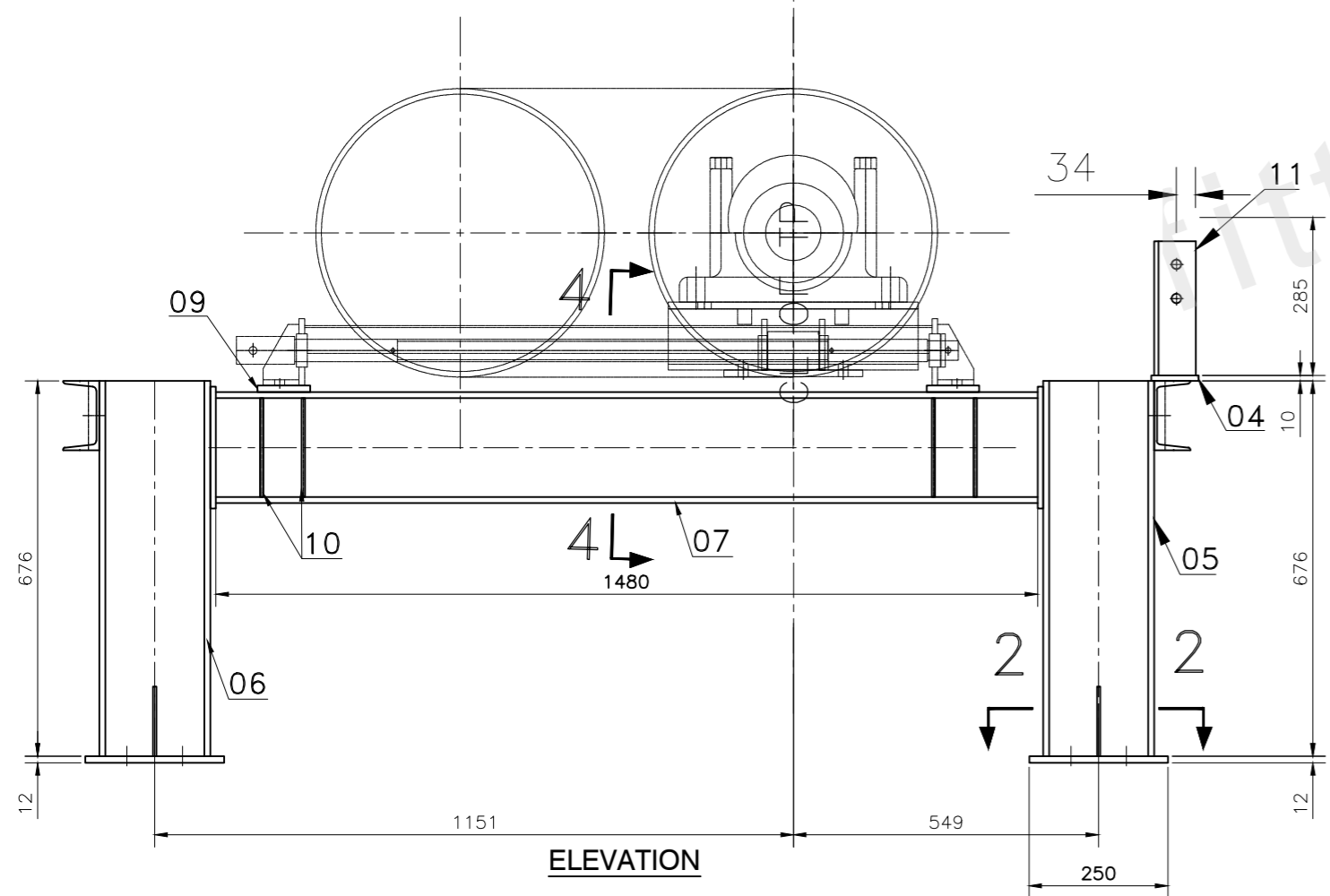
SECTION 2-2



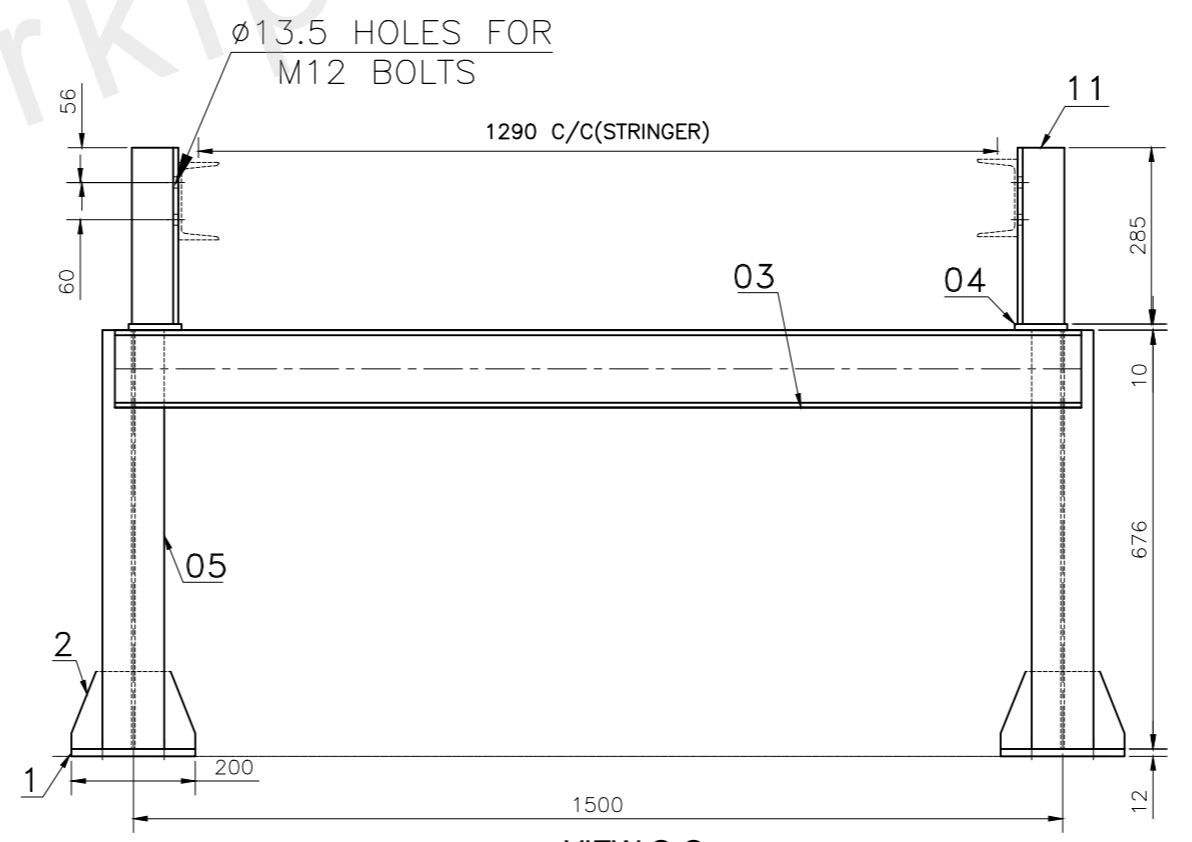
VIEW F-F

NOTES :-

1. ALL DIMENSIONS ARE IN MM
2. ALL WELDS ARE 6MM FILLET CONTINUOUS UNLESS OTHER WISE SPECIFIED
3. ALL MEMBERS SHOULD BE CUT AFTER FULL SCALE LAYOUT
4. ALL DRILLED HOLES TO BE MATCH DRILLED WITH THEIR MATING PARTS



ELEVATION



VIEW C-C

PART No.	DESCRIPTION	MATERIAL SPECIFICATION.	QTY.	UNIT	TOTAL WEIGHT IN (Kg.)	REMARKS
11.	ISA 75 X 75 X 6	IS: 2062	02	1.94	4.26	
10.	PL 6 THK 112 W X 200 L	IS: 2062	08	1.06	9.28	
9.	PL 12 THK 95 W X 230 L	IS: 2062	04	2.06	9.06	
8.	PL 10 THK 120 W X 220 L	IS: 2062	04	2.07	9.12	
7.	MB 200 X 1480 L	IS: 2062	02	37.11	81.64	
6.	MB 200 X 676 L	IS: 2062	02	24.79	49.58	
5.	MB 200 X 1051 L	IS: 2062	02	32.79	65.58	
4.	PL 10 THK 85 W X 85 L	IS: 2062	02	0.57	1.25	
3.	MC 125 X 1560 L	IS: 2062	02	19.81	43.59	
2.	PL 6 THK 97 W X 125 L	IS: 2062	08	0.57	5.03	
1.	PL 12THK 250 W X 200 L	IS: 2062	04	4.71	20.72	
			TOTAL	299.11	KGS	

BILL OF MATERIAL

NAME	SIGNATURE	DATE
DRAWN	CHANDU	24.01.19
DESIGN	CHANDU	24.01.19
CHECKED	CHANDU	25.01.19
APPROVED	UDUPA	25.01.19

PROJECTION	THIRD ANGLE	SHEET : 1 OF 1	SCALE : NTS
ALL DIMENSIONS ARE IN MM UNLESS OTHERWISE SPECIFIED.			
ISSUED FOR :- APPROVAL / MANUFACTURING / INFORMATION			

DEPARTMENT :- SP#4
 TITLE :- FABRICATION DRAWING OF TAIL FRAME FOR BC-2 CONVEYOR (SINTER STORAGE FACILITY AT SCREEN BUILDING)
 DRG.No.JSW/PDE/A2/02/22/01/031

SL.NO.	REFERENCE DWG.NO.	REV. No	DATE	DESCRIPTION	BY	APPD BY
2						
1						

NOTES :-
 1. UNSPECIFIED RADIUS SHALL BE NOT MORE THAN 0.5 mm.
 2. UNSPECIFIED CHAMFERS SHALL BE NOT MORE THAN 0.5X45°.
 3. REMOVE BURRS AFTER MACHINING.
 4. PARTS SHALL BE FREE FROM ALL KINDS OF DEFECTS.
 5. ALL SHARP EDGES TO BE SMOOTHLY ROUNDED OFF.

SURFACE FINISH	GEOMETRIC TOLERANCE SYMBOLS	UPPER AND LOWER DEVIATIONS FOR LINEAR DIMENSIONS
~ 50 μm	PARALLEL	4001 TO 8000 ±3
∇ 25 TO 12.5 μm	∠ ANGULAR	8001 TO 12000 ±4
∇∇ 6.3 TO 1.6 μm	⊥ PERPENDICULAR	12001 TO 16000 ±5
∇∇∇ 0.8 TO 0.2 μm	≡ SYMMETRICAL	16001 TO 20000 ±6
∇∇∇∇ 0.1 TO 0.025 μm	— STRAIGHT	401 TO 1000 ±0.8
	⊙ CONCENTRIC	1001 TO 2000 ±1.2
	▭ FLAT	2001 TO 4000 ±2
	↗ RUNOUT	

THIS DRAWING IS THE PROPERTY OF PDE, JSWSL AND IS ISSUED FOR THE SPECIFIC PROJECT MENTIONED THEREIN AND NOT TO BE COPIED/USED FOR ANY OTHER PROJECTS.